

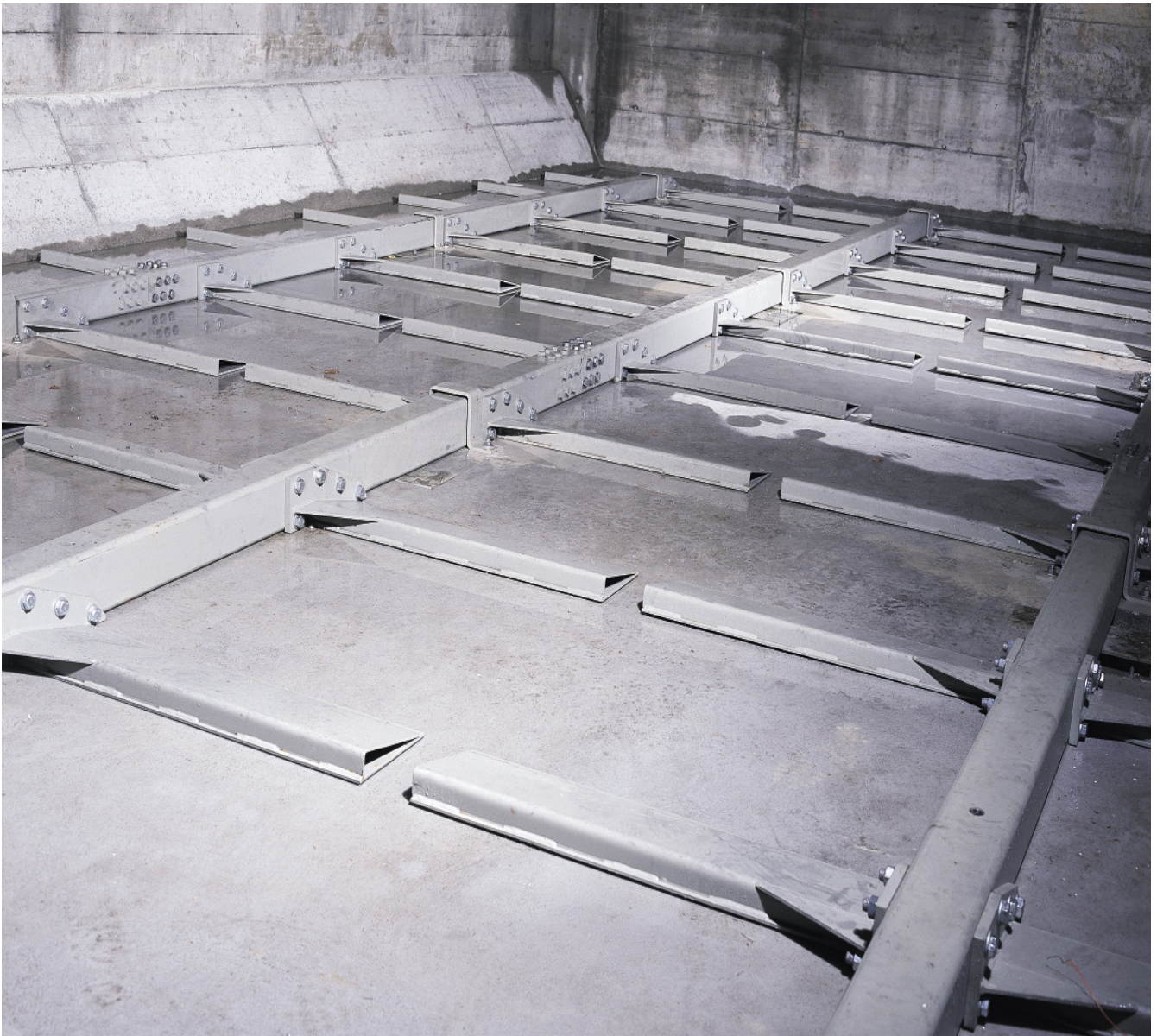
Product Information

MAWERA Bunker Discharger Moving Floor SST Series

Moving floor fuel reclaim system - suitable for hog fuel, wood chips including oversized pieces and fines

The hydraulic moving floor discharger is suitable for reclaiming a wide range of wood fuel from any rectangular shaped bunker. Powerful hydraulic rams move along the bunker floor. Wings attached to the ram push - or pull - the material toward one end of the bunker. The material passes beneath an adjustable 'stopper' gate, then falls into a trough, where another push ram, a chain conveyor or a screw take over the material. Other customer tailored solutions are also available.

The moving floor is especially suitable for handling heavy, wet, occasionally oversized and generally non free flowing materials. Bunkers can be located above, on, or below the ground level to receive material either from a conveyor or from a tipper vehicle or front end loader machine.



MAWERA push ram discharger SST Series in the bunker

Key Advantages:

- heavy-duty design allows handling of difficult and varying material in rectangular bunkers of any size
- loaders and trucks can drive and dump straight into the bunker
- flat bottom bunkers are inexpensive and maximise storage capacity
- high-quality, heavy duty hydraulic components can be serviced while the bunker is filled
- easy set up as rams can be bolted together on site
- low energy consumption compared with other discharge systems
- high reliability - low wear and tear on parts within the bunker



Wing attachment and clamp guiding the ram



Push ram connection



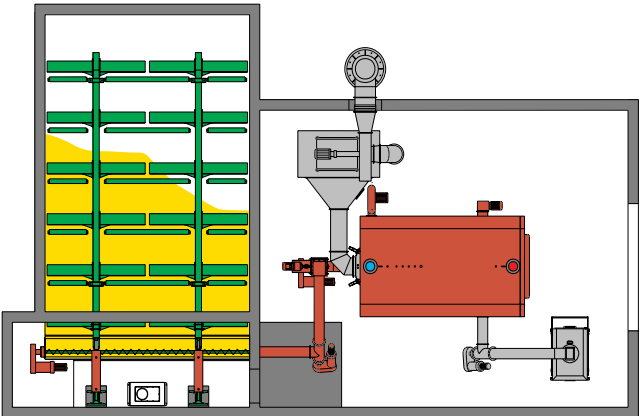
Cylinder suspension

Technical data:

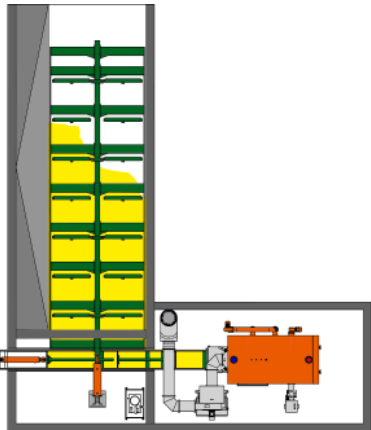
Possible Uses:	rectangular bunker of any size
Installation:	rams can be pulling or pushing
Filling volume:	up to 340 cft (180m ³) per rod
Anchoring:	poured cylinder foundation
Drive:	Hydraulic cylinders
Power consumption:	3kW 5,5kW 11kW 15kW*
Hydraulic pressure:	2,900 to 3,600 PSI - (20,000 to 25,000 kPa)*
Cylinder diameter:	7" 8" 9" - (180 200 220mm*)
Cylinder stroke:	24" to 32" (600 to 800mm)*
Span of wings:	4 1/2' to 10' per rod (1.4 to 3m)*
Length of bunker:	up to 60' (18m)

*depending on the material, bunker size and layout

Installation versions:



Further transport of the material via screw conveyor system



Further transport of the material via hydraulic horizontal push ram

MAWERA Holzfeuerungsanlagen
Gesellschaft mbH
A 6971 Hard am Bodensee
Neulandstraße 30
T 0043 / (0)5574 / 74 301-0
F 0043 / (0)5574 / 74 301-20
info@mawera.com
www.mawera.com

MAWERA
Kessel & Maschinenbau GmbH
D 88131 Lindau
Robert-Bosch-Straße 15
T 0049 / (0)8382 / 977 012
F 0049 / (0)8382 / 977 013
info@mawera.com
www.mawera.com

MAWERA (Canada) Ltd.
104 Sixth Street East, P.O. Box 2716
Revelstoke, BC
VoE 2S0 Canada
P +1 (250) 814 - 7184
F +1 (250) 837 - 5556
info@mawera.com
www.mawera.ca

MAWERA (UK) Limited
31 Enterprise Ind. Est.
Britannia Way
LICHFIELD
Staffordshire WS 14 9UY
P +44 - (0)1543 - 25 88 44
F +44 - (0)1543 - 41 63 11
info@mawera.com
www.mawera.com